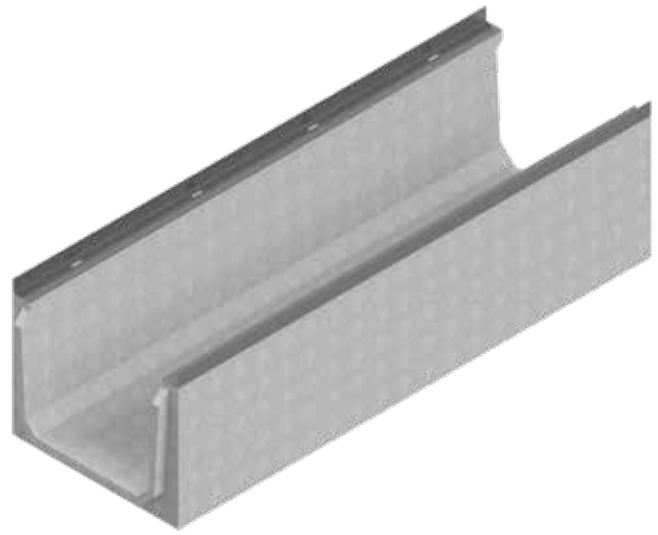


REINFORCED CONCRETE CHANNELS

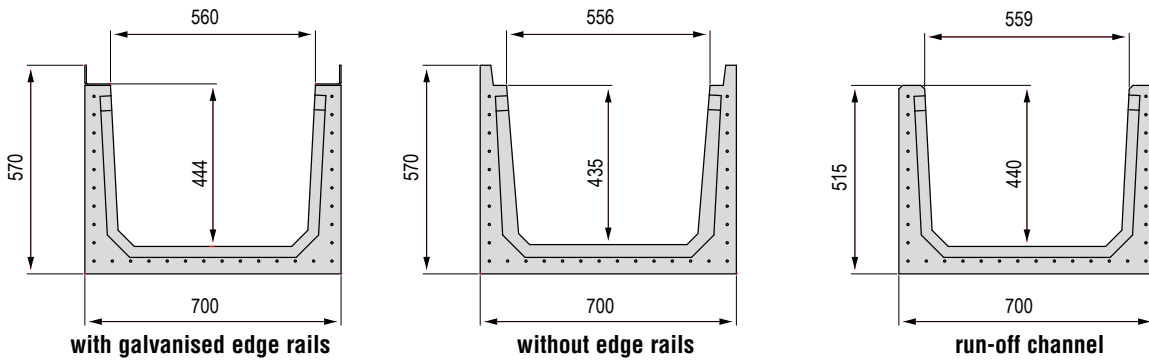
C 700 SERIES

Grating width 700 mm

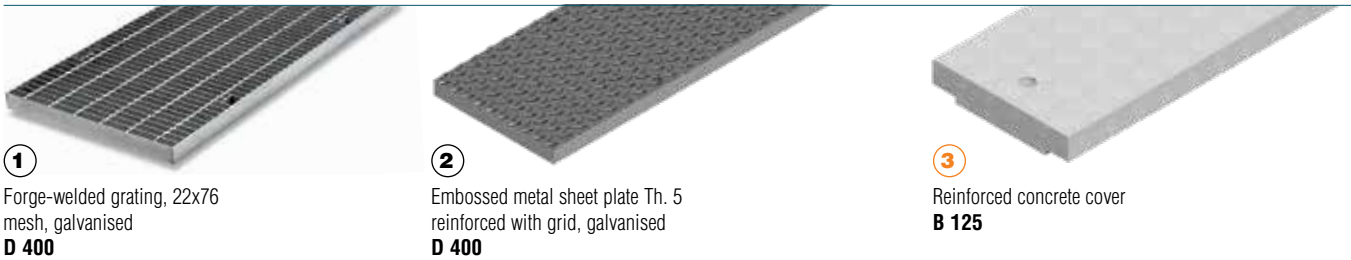
Reinforced concrete channel with galvanised edge rails complying with the UNI EN 1433 standard. The channels are sold exclusively in complete pallets and together with the gratings.



C 700 Series channel dimensions



Available gratings N.B.: the concrete cover is available only on request



Grating L mm	Code	Grating	Description of the gratings complete with accessories for C 700 channel	Weight kg	Price €	Load class
1,000	4Y00G	①	Forge-welded galvanised grating 50x4 22x76 complete with stainless steel nuts and bolts	57.90	398.67	D 400
	4Y00P	②	Embossed metal sheet plate Th. 5 reinforced with galvanised grid, complete with stainless steel nuts and bolts	59.86	360.62	
	4YA06	③	Solid reinforced concrete cover only for water run-off channel	159.66	100.06	B 125

C 700 Series channel without grating

Channel L mm	Code	Description	Water passage mm	Run-off section cm ²	Weight kg	Pieces pallet	Price €
2,000	4Y01S	Reinforced concrete channel with galvanised edge rails (combine with 2 gratings or plates L=1,000 mm)	560	2256	652	2	673.76
	4YN1S	Reinforced concrete channel without galvanised edge rails (combine with 2 gratings or plates L=1,000 mm)	556	2256	660	2	402.39
	4YA1S	Reinforced concrete water run-off channel (combine with 2 reinforced concrete covers L=1,000 mm)	559	2256	646	2	370.57
1,000	4Y00S	Reinforced concrete channel with galvanised edge rails	560	2256	316	4	430.59
	4YN0S	Reinforced concrete channel without galvanised edge rails	556	2256	330	4	254.92
	4YA0S	Reinforced concrete water run-off channel	559	2256	323	4	223.10

ADDITIONAL PROCESSING ON REQUEST

Code	Accessories	Weight kg	Price €
	Channel bottom drilling Ø 402 mm		120.78