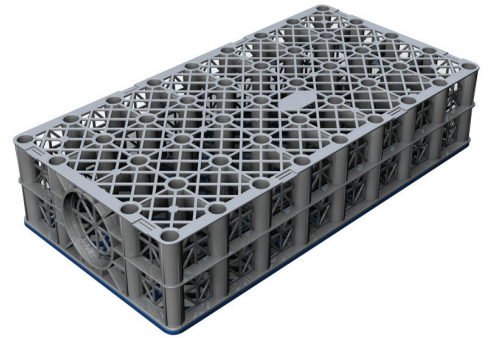


Polystorm Xtra has been designed for applications where burial depths are low or the ground is used for high trafficked areas with deep burial depths.

Polystorm Xtra answers both requirements with a compressive strength of up to 80 tonnes/m<sup>2</sup>. This allows for deeper burial, and consequently higher volumes of water capture and storage.

At the same time, with each individual cell measuring just 0.21m high, Polystorm Xtra can be used to add strength even in shallower applications where ground conditions prevent deeper excavation.



### Key Benefits

- Compressive strength of 80 tonnes/m<sup>2</sup>
- Ideal for attenuation or soakaway applications/schemes with a suitable geomembrane or geotextile
- Designed for heavy trafficked conditions which require shallow excavations or deep burial depths
- Can be used as part of a value engineered hybrid system in non-loaded and light traffic applications with Polystorm, Polystorm-R & Polystorm Lite
- Installed with coloured lid facing down for increased strength
- Undergone testing in accordance to BBA certification
- Integrated inlet and outlet
- 3D flow throughout the structure
- 94% void ratio

### Technical Support

Detailed guidance and assistance is available.

For further information, please contact our technical team

on **+44 (0)1509 615100** or email: [wmsenquiries@polypipe.com](mailto:wmsenquiries@polypipe.com)

### TECHNICAL SPECIFICATION OVERVIEW

UNIT TYPE	POLYSTORM XTRA*
Product Code	PSM3
Length	1m
Width	0.5m
Depth	0.21m
Total Volume	0.105m <sup>3</sup>
Unit Weight	6kg
Unit Storage Volume	0.0986m <sup>3</sup> (98 litres)
Void Ratio	94%
Vertical Compressive Strength	Maximum 834kN/m <sup>2</sup> **
Lateral Compressive Strength	Maximum 93kN/m <sup>2</sup> **
Short-Term Vertical Deflection	97.8kN/m <sup>2</sup> per mm
Short-Term Lateral Deflection	7.1kN/m <sup>2</sup> per mm
Maximum Burial Depths:	
Heavy Trafficked	4.8m***
Light Trafficked	5.3m***
Non-Trafficked	5.45m***

\* Each unit includes 4 clips and 2 shear connectors.

\*\* Compressive strength at yield, maximum recommended value for design purposes.

\*\*\* Based on ground conditions being dense sand and gravel with no groundwater present using the calculation methodology detailed within CIRIA C680 (2008). Where ground conditions differ please consult Polypipe's water management solutions technical department on +44 (0)1509 615100.

All descriptions and illustrations in this publication are intended for guidance only and shall not constitute a 'sale by description'. All dimensions given are nominal and Polypipe may modify and change the information, products and specifications from time to time for a variety of reasons, without prior notice. The information in this publication is provided 'as is' on June 2013. Updates will not be issued automatically. This information is not intended to have any legal effect, whether by way of advice, representation or warranty (express or implied). We accept no liability whatsoever (to the extent permitted by law) if you place any reliance on this publication you must do so at your own risk. All rights reserved. Copyright in this publication belongs to Polypipe and all such copyright may not be used, sold, copied or reproduced in whole or part in any manner in any media to any person without prior consent. Polypipe is a registered trademark of Polypipe. All Polypipe products are protected by Design Right under CDPA 1988. Copyright © 2013 Polypipe. All rights reserved.