

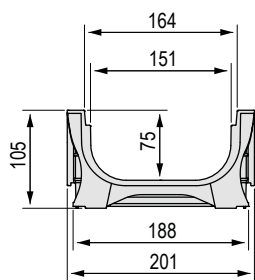
# ABS CHANNELS PLASTIC FLY 150 Low

Grating width 200 mm

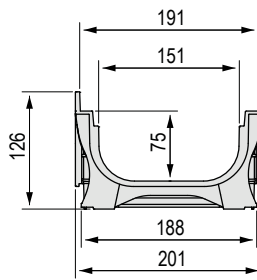
ABS channel available in various versions for housing the grating: without edge rails, with ABS edge rails or with metal edge rails, complying with the UNI EN 1433 standard. The channels are sold exclusively in complete pallets and together with the gratings.



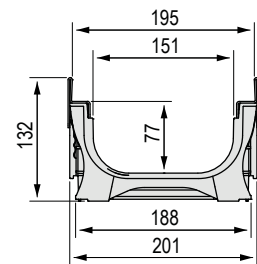
## Dimensions of the Plastic Fly 150 Low channel based on the type of edge rail used



Without protective edge rail  
(applicable to code 4D1ASLA only)

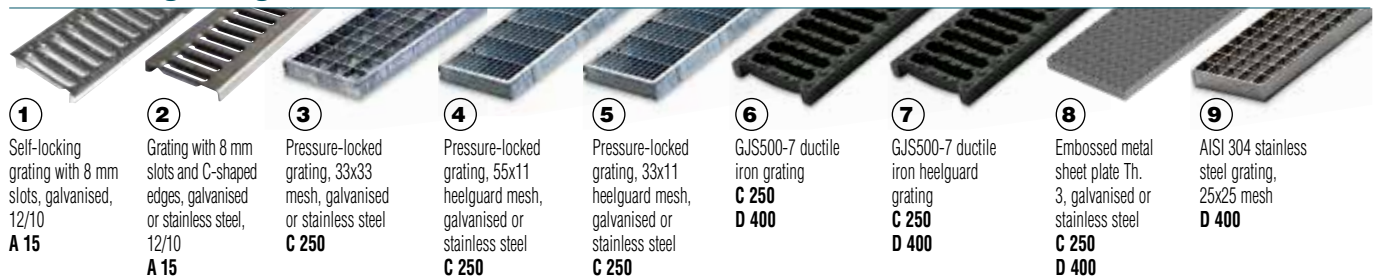


With ABS protective edge rail



With protective edge rail MADE OF GALVANISED  
STEEL OR AISI 304 STAINLESS STEEL

## Available gratings



① Self-locking grating with 8 mm slots, galvanised, 12/10  
**A 15**

② Grating with 8 mm slots and C-shaped edges, galvanised or stainless steel, 12/10  
**A 15**

③ Pressure-locked grating, 33x33 mesh, galvanised or stainless steel  
**C 250**

④ Pressure-locked grating, 55x11 heelguard mesh, galvanised or stainless steel  
**C 250**

⑤ Pressure-locked grating, 33x11 heelguard mesh, galvanised or stainless steel  
**C 250**

⑥ GJS500-7 ductile iron grating  
**C 250**  
**D 400**

⑦ GJS500-7 ductile iron heelguard grating  
**C 250**  
**D 400**

⑧ Embossed metal sheet plate Th. 3, galvanised or stainless steel  
**C 250**  
**D 400**

⑨ AISI 304 stainless steel grating, 25x25 mesh  
**D 400**

## Plastic Fly 150 Low channel complete with grating - Length 1,000 mm

### WITHOUT PROTECTIVE EDGE RAIL

Channel L mm	Code	Grating	Description of the channel assembled with the grating complete with accessories	Weight kg	Load class
1,000	4D1ASLA	①	Channel complete with self-locking press-formed metal sheet inlay grating 12/10, galvanised	4.21	<b>A 15</b>

### WITH ABS PROTECTIVE EDGE RAIL

Channel L mm	Code	Grating	Description of the channel assembled with the grating complete with accessories	Weight kg	Load class
1,000	4D1BSLC	②	Channel complete with galvanised press-formed metal sheet grating 12/10 with C-shaped edges	4.31	<b>A 15</b>
	4D1BSG1	③	Channel complete with pressure-locked grating with C-shaped edges, 25x2-10x2 33x33, hot-dip galvanised	5.86	<b>C 250</b>
	4D1BSG2	④	Channel complete with pressure-locked grating with C-shaped edges, 25x2-10x2 55x11 heelguard mesh, hot-dip galvanised	6.49	
	4D1BSG3	⑤	Channel complete with pressure-locked grating with C-shaped edges, 25x2-10x2 33x11 heelguard mesh, hot-dip galvanised	7.45	
	4D1BSGS	⑥	Channel complete with 2 x GJS500-7 ductile iron gratings	17.83	
	4D1BSGSA	⑦	Channel complete with 2 x GJS500-7 ductile iron heelguard gratings	20.29	
	4D1BSP	⑧	Channel complete with embossed metal sheet solid plate Th. 3, reinforced and hot-dip galvanised	18.7	

## WITH GALVANISED PROTECTIVE EDGE RAIL

Channel L mm	Code	Grating	Description of the channel assembled with the grating complete with accessories	Weight kg	Load class
1,000	4D1CSLC	②	Channel complete with galvanised press-formed metal sheet grating 12/10 with C-shaped edges	6.97	A 15
	4D1CSG1	③	Channel complete with pressure-locked grating with C-shaped edges, 25x2-10x2 33x33, hot-dip galvanised	8.52	C 250
	4D1CSG2	④	Channel complete with pressure-locked grating with C-shaped edges, 25x2-10x2 55x11 heelguard mesh, hot-dip galvanised	9.15	
	4D1CSG3	⑤	Channel complete with pressure-locked grating with C-shaped edges, 25x2-10x2 33x11 heelguard mesh, hot-dip galvanised	10.11	
	4D1CSGS	⑥	Channel complete with 2 x GJS500-7 ductile iron gratings	20.49	D 400
	4D1CSGSA	⑦	Channel complete with 2 x GJS500-7 ductile iron heelguard gratings	22.95	
	4D1CSP	⑧	Channel complete with embossed metal sheet solid plate Th. 3, AISI 304 stainless steel, reinforced	21.36	

## WITH AISI 304 STAINLESS STEEL PROTECTIVE EDGE RAIL

Channel L mm	Code	Grating	Description of the channel assembled with the grating complete with accessories	Weight kg	Load class
1,000	4D1DSLCL	②	Channel complete with AISI 304 stainless steel press-formed metal sheet grating 12/10 with C-shaped edges	6.97	A 15
	4D1DSX1	③	Channel complete with pressure-locked grating with edging, 25x2-10x2 33x33, AISI 304 stainless steel	8.79	C 250
	4D1DSX2	④	Channel complete with pressure-locked grating with edging, 25x2-10x2 55x11 heelguard mesh, AISI 304 stainless steel	9.39	
	4D1DSX3	⑤	Channel complete with pressure-locked grating with edging, 25x2-10x2 33x11 heelguard mesh, AISI 304 stainless steel	10.29	
	4D1DSPI	⑧	Channel complete with embossed metal sheet solid plate Th. 3, AISI 304 stainless steel, reinforced	21.36	D 400
	4D1DSX4	⑨	Channel complete with pressure-locked grating with edging, 25x3-10x2 25x25, AISI 304 stainless steel	21.36	

## Plastic Fly 150 Low channel accessories



End cap for channels



End caps with outlets



Anchoring kit

Code	Description	Weight kg
4D1ATI	End cap made of AISI 304 stainless steel sheet Th. 15/10 for Plastic Fly 150 Low channel without edge rail	1.08
4D1BTI	End cap made of AISI 304 stainless steel sheet Th. 15/10 for Plastic Fly 150 Low channel with edge rail	1.15
4D1ARI	End cap with outlet made of AISI 304 stainless steel sheet Th. 15/10 for Plastic Fly 150 Low channel without edge rail, Ø 60 mm	1.74
4D1BRI	End cap with outlet made of AISI 304 stainless steel sheet thickness 15/10 for Plastic Fly 150 Low channel with edge rail, Ø 89 mm	1.83
4D10K	Anchoring kit for galvanised gratings	0.02
4D10V	Anchoring kit for stainless steel and ductile iron gratings, and for galvanised and stainless steel plates	0.02

## Plastic Fly 150 Low channel without grating - Length 1,000 mm

Channel L mm	Code	Description	Water passage mm	Run-off section cm <sup>2</sup>	Weight kg	Pieces pallet
1,000	4D1AS	Plastic Fly 150 Low ABS channel	150	106	1.77	55
	4D1BS	Plastic Fly 150 Low ABS channel with ABS protective edge rail	150	106	1.93	55
	4D1CS	Plastic Fly 150 Low ABS channel with galvanised protective edge rail	150	106	4.59	55
	4D1DS	Plastic Fly 150 Low ABS channel with AISI 304 stainless steel edge rail	150	106	4.59	55