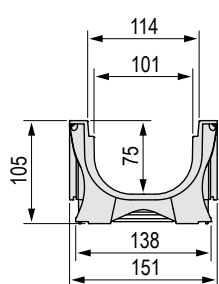


ABS CHANNELS

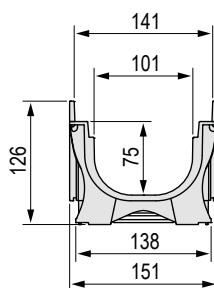
PLASTIC FLY 100 Low

Grating width 150 mm

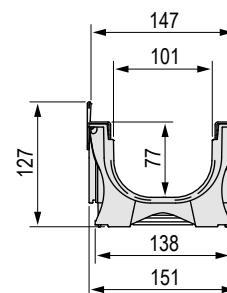
ABS channel available in various versions for housing the grating: without edge rails, with ABS edge rails or with metal edge rails, complying with the UNI EN 1433 standard.
The channels are sold exclusively in complete pallets and together with the gratings.

**Dimensions of the Plastic Fly 100 Low channel based on the type of edge rail used**

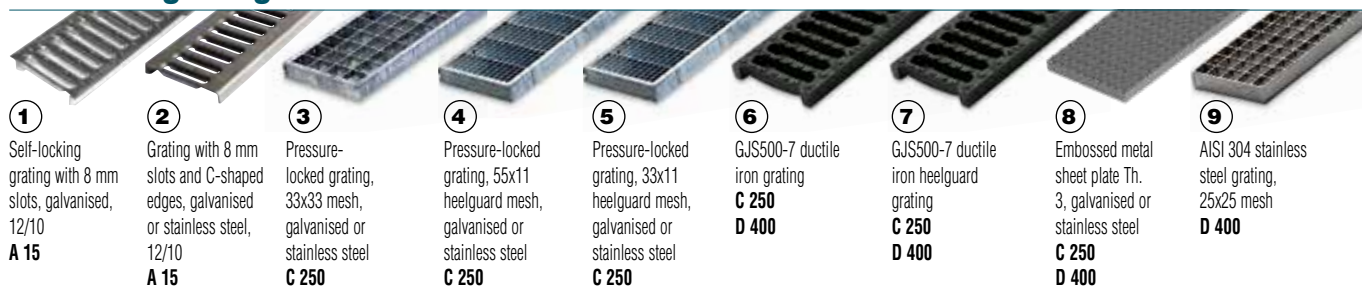
Without protective edge rail
(applicable to code 4D0ASLA only)



With **ABS** protective edge rail



With protective edge rail **MADE OF GALVANISED STEEL OR AISI 304 STAINLESS STEEL**

Available gratings**Plastic Fly 100 Low channel complete with grating** - Length 1,000 mm**WITHOUT PROTECTIVE EDGE RAIL**

Channel L mm	Code	Grating	Description of the channel assembled with the grating complete with accessories	Weight kg	Load class	
1,000	4D0ASLA	①	Channel complete with self-locking press-formed metal sheet inlay grating 12/10, galvanised	3.58	A 15	

WITH ABS PROTECTIVE EDGE RAIL

Channel L mm	Code	Grating	Description of the channel assembled with the grating complete with accessories	Weight kg	Load class	
1,000	4D0BSLC	②	Channel complete with galvanised press-formed metal sheet grating 12/10 with C-shaped edges	3.58	A 15	
	4D0BSG1	③	Channel complete with pressure-locked grating with C-shaped edges, 20x2-10x2 33x33, hot-dip galvanised	4.30	C 250	
	4D0BSG2	④	Channel complete with pressure-locked grating with C-shaped edges, 20x2-10x2 55x11 heelguard mesh, hot-dip galvanised	5.02		
	4D0BSG3	⑤	Channel complete with pressure-locked grating with C-shaped edges, 20x2-10x2 33x11 heelguard mesh, hot-dip galvanised	5.58		
	4D0BSGS	⑥	Channel complete with 2 x GJS500-7 ductile iron gratings	9.66		
	4D0BSGSA	⑦	Channel complete with 2 x GJS500-7 ductile iron heelguard gratings	11.72		
	4D0BSP	⑧	Channel complete with embossed metal sheet solid plate Th. 3, reinforced and hot-dip galvanised	12.01		

WITH GALVANISED PROTECTIVE EDGE RAIL

Channel L mm	Code	Grating	Description of the channel assembled with the grating complete with accessories	Weight kg	Load class
1,000	4D0CSLC	②	Channel complete with galvanised press-formed metal sheet grating 12/10 with C-shaped edges	6.24	A 15
	4D0CSG1	③	Channel complete with pressure-locked grating with C-shaped edges, 20x2-10x2 33x33, hot-dip galvanised	6.96	C 250
	4D0CSG2	④	Channel complete with pressure-locked grating with C-shaped edges, 20x2-10x2 55x11 heelguard mesh, hot-dip galvanised	7.66	
	4D0CSG3	⑤	Channel complete with pressure-locked grating with C-shaped edges, 20x2-10x2 33x11 heelguard mesh, hot-dip galvanised	8.23	
	4D0CSGS	⑥	Channel complete with 2 x GJS500-7 ductile iron gratings	12.32	D 400
	4D0CSGSA	⑦	Channel complete with 2 x GJS500-7 ductile iron heelguard gratings	14.38	
	4D0CSP	⑧	Channel complete with embossed metal sheet solid plate Th. 3, reinforced and hot-dip galvanised	14.67	

WITH AISI 304 STAINLESS STEEL PROTECTIVE EDGE RAIL

Channel L mm	Code	Grating	Description of the channel assembled with the grating complete with accessories	Weight kg	Load class
1,000	4D0DSLCL	②	Channel complete with AISI 304 stainless steel press-formed metal sheet grating 12/10 with C-shaped edges	6.3	A 15
	4D0DSX1	③	Channel complete with pressure-locked grating with edging, 20x2-10x2 33x33, AISI 304 stainless steel	7.97	C 250
	4D0DSX2	④	Channel complete with pressure-locked grating with edging, 20x2-10x2 55x11 heelguard mesh, AISI 304 stainless steel	8.22	
	4D0DSX3	⑤	Channel complete with pressure-locked grating with edging, 20x2-10x2 33x11 heelguard mesh, AISI 304 stainless steel	8.02	
	4D0DSPI	⑧	Channel complete with embossed metal sheet solid plate Th. 3, AISI 304 stainless steel, reinforced	14.67	D 400
	4D0DSX4	⑨	Channel complete with pressure-locked grating with edging, 20x3-10x2 25x25, AISI 304 stainless steel	8.78	

Plastic Fly 100 Low channel accessories



End cap for channels



End caps with outlets



Anchoring kit

Code	Description	Weight kg
4D0ATI	End cap made of AISI 304 stainless steel sheet Th. 15/10 for Plastic Fly 100 Low channel without edge rail	0.20
4D0BTI	End cap made of AISI 304 stainless steel sheet Th. 15/10 for Plastic Fly 100 Low channel with edge rail	0.32
4D0ARI	End cap with outlet made of AISI 304 stainless steel sheet Th. 15/10 for Plastic Fly 100 Low channel without edge rail, Ø 60 mm	0.48
4D0BRI	End cap with outlet made of AISI 304 stainless steel sheet thickness 15/10 for Plastic Fly 100 Low channel with edge rail, Ø 89 mm	0.48
4D00K	Anchoring kit for galvanised gratings	0.02
4D00V	Anchoring kit for stainless steel and ductile iron gratings, and for galvanised and stainless steel plates	0.02

Plastic Fly 100 Low channel without grating - Length 1,000 mm

Channel L mm	Code	Description	Water passage mm	Run-off section cm ²	Weight kg	Pieces pallet
1,000	4D0AS	Plastic Fly 100 Low ABS channel	100	69	1.6	78
	4D0BS	Plastic Fly 100 Low ABS channel with ABS protective edge rail	100	69	1.76	78
	4D0CS	Plastic Fly 100 Low ABS channel with galvanised protective edge rail	100	69	4.42	78
	4D0DS	Plastic Fly 100 Low ABS channel with AISI 304 stainless steel edge rail	100	69	4.42	78