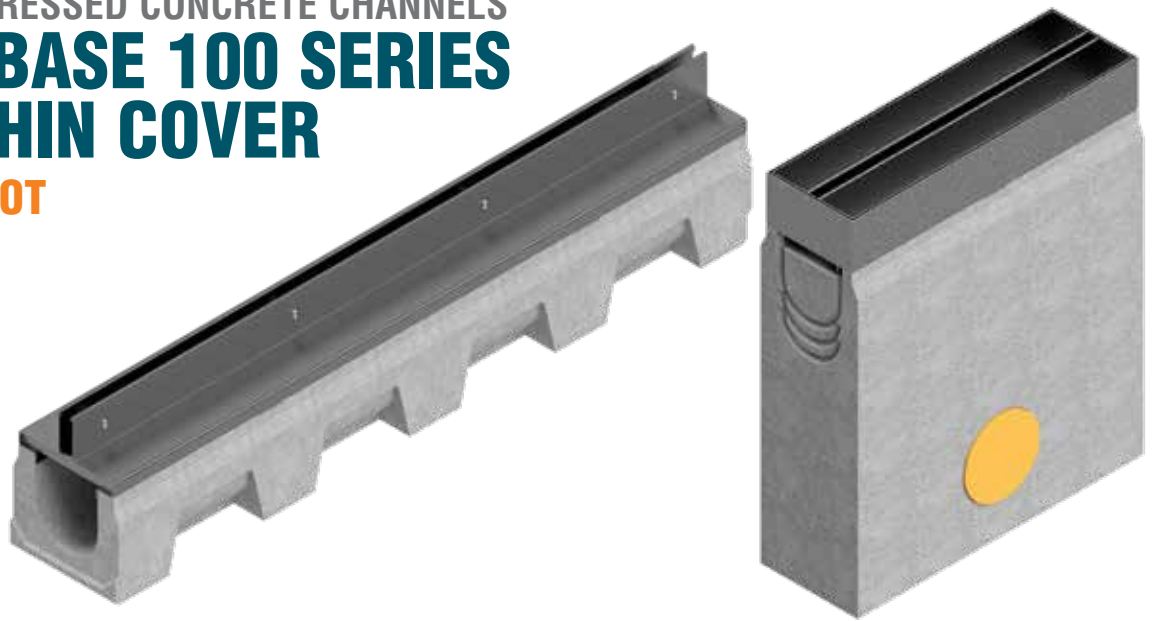


# VIBRO-COMPRESSED CONCRETE CHANNELS

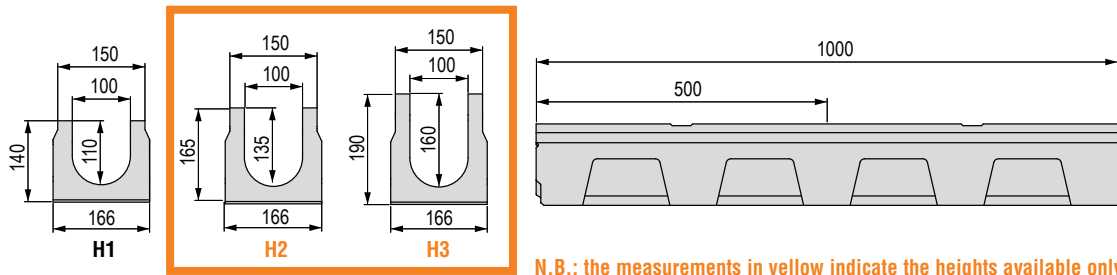
## VIBRO-BASE 100 SERIES

### WITH THIN COVER

#### CENTRAL SLOT



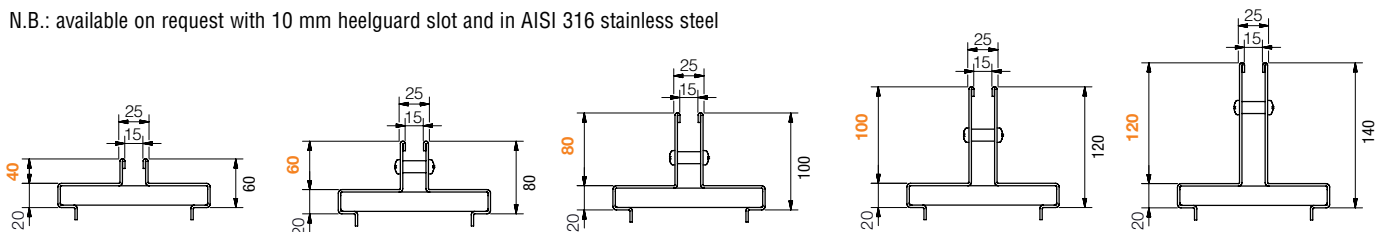
### Vibro-Base 100 Series channel dimensions



N.B.: the measurements in yellow indicate the heights available only on request

### Available Thin covers

N.B.: available on request with 10 mm heelguard slot and in AISI 316 stainless steel



### Vibro-Base 100 Series channel without grating - Length 1,000 / 500 mm

Channel L mm	Code	Description	Water passage mm	Run-off section cm <sup>2</sup>	Weight kg	Pieces pallet
1,000	4F00S	Vibro-compressed concrete channel H1	100	99	27.74	loose
	4F01S	Vibro-compressed concrete channel H2	100	124	31.17	loose
	4F02S	Vibro-compressed concrete channel H3	100	149	33.60	loose
500	4F05S	Vibro-compressed concrete channel H1	100	99	13.87	loose
	4F06S	Vibro-compressed concrete channel H2	100	124	15.92	loose
	4F07S	Vibro-compressed concrete channel H3	100	149	16.80	loose

### Vibro-Base 100 Series concrete sump unit without grating

Sump unit L mm	Code	Description	Weight kg
500	4F00PZ	Reinforced concrete sump unit	60.20



## Thin covers with central slot - Slot width 15 mm

### GALVANISED

Cover L mm	Code	Description	Slot height mm	Weight kg	Load class
1,000	4F00T0	Thin central cover, hot-dip galvanised, Th. 20/10	40	5.70	C 250
	4F00T	Thin central cover, hot-dip galvanised, Th. 20/10	60	6.33	
	4F00T1	Thin central cover, hot-dip galvanised, Th. 20/10	80	6.96	D 400
	4F00T2	Thin central cover, hot-dip galvanised, Th. 20/10	100	7.58	
	4F00T3	Thin central cover, hot-dip galvanised, Th. 20/10	120	8.21	
500	4F05T0	Thin central cover, hot-dip galvanised, Th. 20/10	40	2.85	C 250
	4F05T	Thin central cover, hot-dip galvanised, Th. 20/10	60	3.16	
	4F05T1	Thin central cover, hot-dip galvanised, Th. 20/10	80	3.48	D 400
	4F05T2	Thin central cover, hot-dip galvanised, Th. 20/10	100	3.79	
	4F05T3	Thin central cover, hot-dip galvanised, Th. 20/10	120	4.11	

N.B.: the Thin cover is supplied loose

### AISI 304 STAINLESS STEEL

Cover L mm	Code	Description	Slot height mm	Weight kg	Load class
1,000	4F00I0	Thin central cover, <b>AISI 304 stainless steel</b> , Th. 20/10	40	5.70	C 250
	4F00I	Thin central cover, <b>AISI 304 stainless steel</b> , Th. 20/10	60	6.33	
	4F00I1	Thin central cover, <b>AISI 304 stainless steel</b> , Th. 20/10	80	6.96	D 400
	4F00I2	Thin central cover, <b>AISI 304 stainless steel</b> , Th. 20/10	100	7.58	
	4F00I3	Thin central cover, <b>AISI 304 stainless steel</b> , Th. 20/10	120	8.21	
500	4F05I0	Thin central cover, <b>AISI 304 stainless steel</b> , Th. 20/10	40	2.85	C 250
	4F05I	Thin central cover, <b>AISI 304 stainless steel</b> , Th. 20/10	60	3.16	
	4F05I1	Thin central cover, <b>AISI 304 stainless steel</b> , Th. 20/10	80	3.48	D 400
	4F05I2	Thin central cover, <b>AISI 304 stainless steel</b> , Th. 20/10	100	3.79	
	4F05I3	Thin central cover, <b>AISI 304 stainless steel</b> , Th. 20/10	120	4.11	

N.B.: the Thin cover is supplied loose



## Inspection buckets for Thin covers with central slot - Slot width 15 mm

### GALVANISED

Bucket L mm	Code	Description	Slot height mm	Weight kg	Load class
500	4F05V0	Inspection bucket for galvanised Thin central cover	40	4.42	C 250
	4F05V	Inspection bucket for galvanised Thin central cover	60	5.14	
	4F05V1	Inspection bucket for galvanised Thin central cover	80	5.86	D 400
	4F05V2	Inspection bucket for galvanised Thin central cover	100	6.57	
	4F05V3	Inspection bucket for galvanised Thin central cover	120	7.29	

N.B.: the Thin bucket is supplied loose

### AISI 304 STAINLESS STEEL

Bucket L mm	Code	Description	Slot height mm	Weight kg	Load class
500	4F05VI0	Inspection bucket for Thin central cover made of <b>AISI 304 stainless steel</b>	40	4.42	C 250
	4F05VI	Inspection bucket for Thin central cover made of <b>AISI 304 stainless steel</b>	60	5.14	
	4F05VI1	Inspection bucket for Thin central cover made of <b>AISI 304 stainless steel</b>	80	5.86	D 400
	4F05VI2	Inspection bucket for Thin central cover made of <b>AISI 304 stainless steel</b>	100	6.57	
	4F05VI3	Inspection bucket for Thin central cover made of <b>AISI 304 stainless steel</b>	120	7.29	

N.B.: the Thin bucket is supplied loose