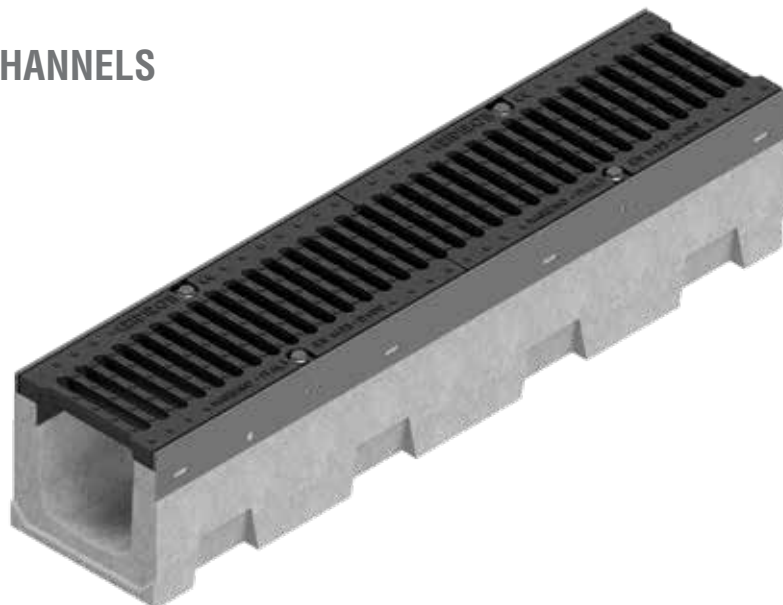


VIBRO-COMPRESSED CONCRETE CHANNELS

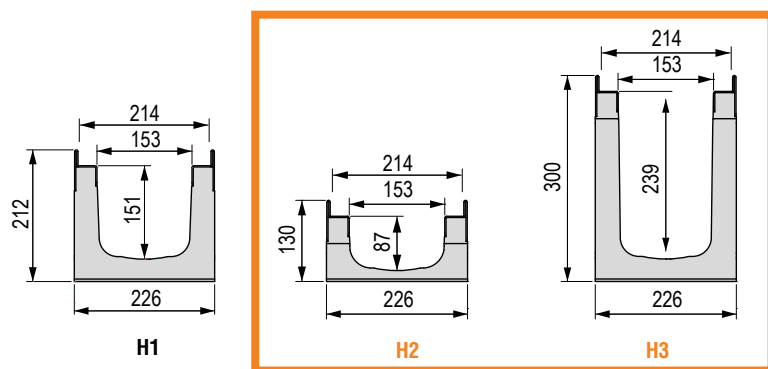
R 210 SERIES

Grating width 210 mm

Vibro-compressed concrete channel with galvanised protective edge rails. The channels are sold exclusively in complete pallets and together with the gratings.



R 210 Series channel dimensions



N.B.: the measurements in yellow indicate the heights available only on request

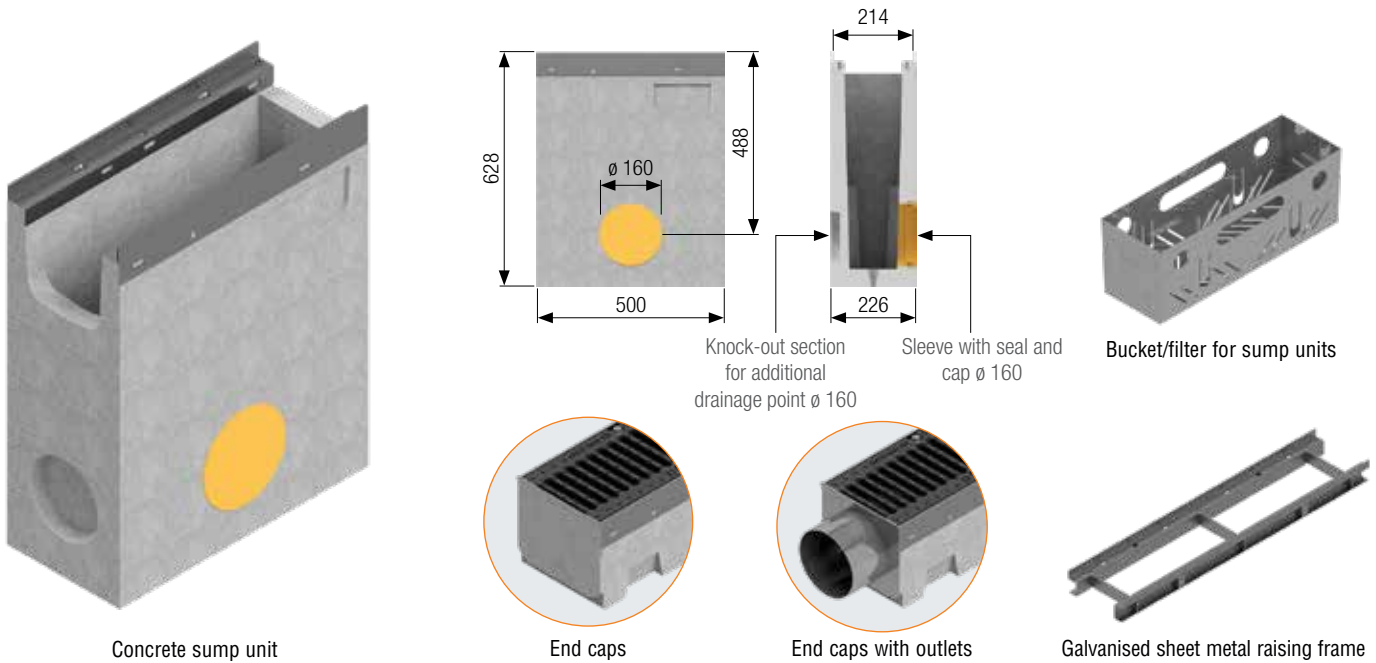
Available gratings



R 210 Series channel complete with grating - Length 1,000

Channel L mm	Code	Grating	Description of the H1 channel assembled with the grating complete with accessories	Weight kg	Price €	Load class
1,000	4R02SGP	①	Channel complete with pressure-locked grating with C-shaped edges, 25x2-10x2 33x33, hot-dip galvanised	54.65	130.53	C 250
	4R02SGPA	②	Channel complete with pressure-locked heelguard grating with C-shaped edges, 25x2-10x2 33x11, hot-dip galvanised	55.38	149.54	
	4R02SP	③	Channel complete with embossed metal sheet plate Th. 3, reinforced and hot-dip galvanised	64.28	276.74	D 400
	4R02SGG	④	Channel complete with 2 x GJS500-7 D 400 ductile iron gratings	64.00	157.71	
	4R02SGSE	⑤	Channel complete with 2 x GJS500-7 E 600 ductile iron gratings	66.20	176.62	

R 210 Series accessories



R 210 Series concrete sump unit complete with grating - Length 500 mm

Sump unit L mm	Code	Grating	Description of the sump unit assembled with the grating complete with accessories	Weight kg	Price €	Load class
500	4R02PZGP	①	Sump unit complete with pressure-locked grating with C-shaped edges, 25x2-10x2 33x33, hot-dip galvanised	80.65	234.54	C 250
	4R02PZGPA	②	Sump unit complete with pressure-locked grating with C-shaped edges, 25x2-10x2 33x11 heelguard mesh, hot-dip galvanised	81.15	244.31	
	4R02PZP	③	Sump unit complete with embossed metal sheet plate Th. 3, reinforced and hot-dip galvanised	86.00	309.73	D 400
	4R02PZGS	④	Sump unit complete with GJS500-7 D 400 ductile iron grating	85.06	246.36	
	4R02PZGSE	⑤	Sump unit complete with GJS500-7 E 600 ductile iron grating	86.20	251.76	

R 210 Series concrete sump unit without grating and accessories

Code	Description	Weight kg	Price €
4R02PZ	Reinforced concrete sump unit with galvanised edge rail L 500 mm	78.80	199.65
4R02VI	Bucket/Filter, AISI 304 stainless steel	1.50	62.12
4R02TID	Right-hand end cap for channel closure female side	0.53	24.88
4R02TIS	Left-hand end cap for channel closure male side	0.53	24.88
4R02RI	End cap with outlet Ø 156 mm	1.30	44.68
4R02PR	Galvanised sheet metal raising frame for two-stage channel laying		137.53
	Channel bottom drilling Ø 132 mm		53.76

R 210 Series channel without grating - Length 1,000

Channel L mm	Code	Description	Water passage mm	Run-off section cm ²	Weight kg	Pieces pallet	Price €
1,000	4R02S	Additivated vibro-compressed concrete R210 H1 channel with galvanised protective edge rails, complying with the UNI EN 1433 standard.	153	215	49.88	20	90.86
	4R021S	Additivated vibro-compressed concrete R210 H2 channel with galvanised protective edge rails, complying with the UNI EN 1433 standard.	153	115	35.22	25	87.12
	4R022S	Additivated vibro-compressed concrete R210 H3 channel with galvanised protective edge rails, complying with the UNI EN 1433 standard.	153	342	60.34	20	98.60