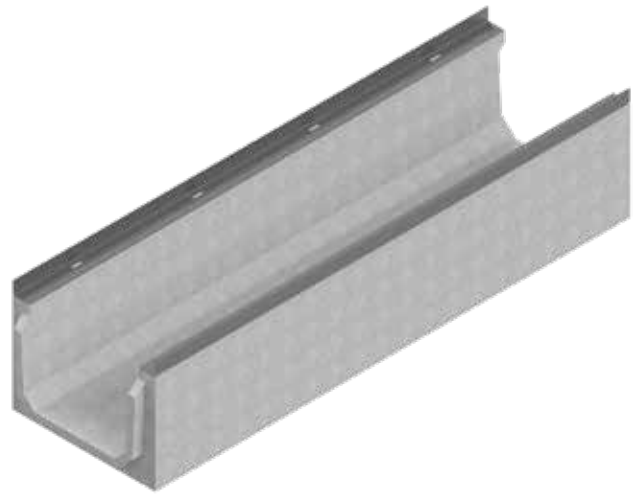


# REINFORCED CONCRETE CHANNELS

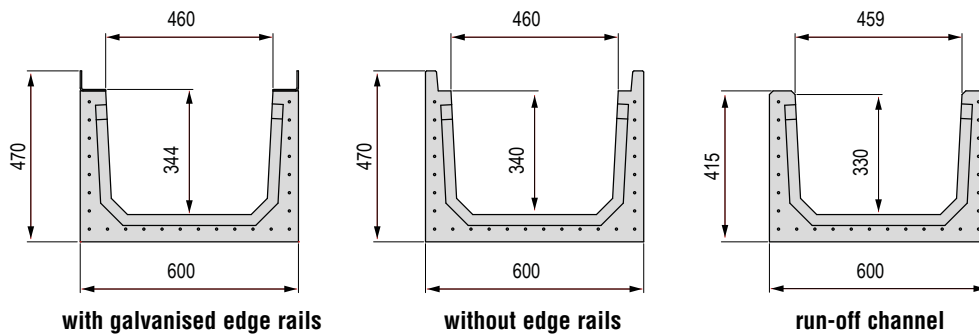
## C 600 SERIES

Grating width 600 mm

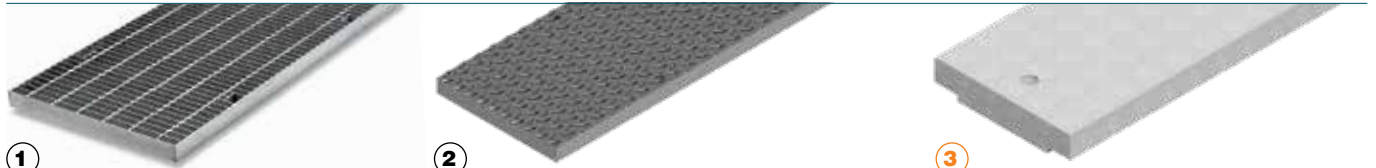
Reinforced concrete channel with galvanised edge rails complying with the UNI EN 1433 standard. The channels are sold exclusively in complete pallets and together with the gratings.



### C 600 Series channel dimensions



### Available gratings N.B.: the concrete cover is available only on request



① Forge-welded grating, 22x76 mesh, galvanised  
**D 400**

② Embossed metal sheet plate Th. 5 reinforced with grid, galvanised  
**D 400**

③ Reinforced concrete cover  
**B 125**

Grating L mm	Code	Grating	Description of the gratings complete with accessories for C 600 channel	Weight kg	Price €	Load class
1,000	4X00G	①	Forge-welded galvanised grating 50x4 22x76 complete with stainless steel nuts and bolts	50.30	<b>335.07</b>	<b>D 400</b>
	4X00P	②	Embossed metal sheet plate Th. 5 reinforced with galvanised grid, complete with stainless steel nuts and bolts	54.00	<b>303.35</b>	
	4XA06	③	Solid reinforced concrete cover only for water run-off channel	135.66	<b>91.49</b>	<b>B 125</b>

### C 600 Series channel without grating

Channel L mm	Code	Description	Water passage mm	Run-off section cm <sup>2</sup>	Weight kg	Pieces pallet	Price €
2,000	4X01S	Reinforced concrete channel <b>with galvanised edge rails</b> (combine with 2 gratings or plates L=1,000 mm)	460	1437	525	3	<b>568.71</b>
	4XN1S	Reinforced concrete channel <b>without galvanised edge rails</b> (combine with 2 gratings or plates L=1,000 mm)	460	1437	543	3	<b>335.35</b>
	4XA1S	Reinforced concrete <b>water run-off channel</b> (combine with 2 reinforced concrete covers L=1,000 mm)	459	1437	519	3	<b>317.58</b>
1,000	4X00S	Reinforced concrete channel <b>with galvanised edge rails</b>	460	1437	260	4	<b>418.70</b>
	4XN0S	Reinforced concrete channel <b>without galvanised edge rails</b>	460	1437	271.5	4	<b>216.59</b>
	4XA0S	Reinforced concrete <b>water run-off channel</b>	459	1437	259.5	4	<b>198.81</b>

### ADDITIONAL PROCESSING ON REQUEST

Code	Accessories	Weight kg	Price €
	Channel bottom drilling Ø 317 mm		<b>94.38</b>